



Andy Beshear  
GOVERNOR

## TRANSPORTATION CABINET

200 Mero Street  
Frankfort, Kentucky 40601

Jim Gray  
SECRETARY

February 14, 2025

CALL NO. 100  
CONTRACT ID NO. 251103  
ADDENDUM # 2

Subject: Madison County, NHPP 0754 (068)  
Letting February 20, 2025

- (1) Revised - Summary Sheet - Pages 46 & 201 of 337
- (2) Added - Special Notes - Pages 63A-63B & 209A-209C of 337
- (3) Revised - Proposal Bid Items - Pages 334-337 of 337

Proposal revisions are available at <http://transportation.ky.gov/Construction-Procurement/>.

If you have any questions, please contact us at 502-564-3500.

Sincerely,

A handwritten signature in black ink that reads "Rachel Mills".

Rachel Mills, P.E.  
Director  
Division of Construction Procurement

RM:mr  
Enclosures

I-75  
 PAVEMENT REHABILITATION PROJECT  
 MADISON COUNTY  
 ITEM NO. 7-22115.00

C CODE	ITEM	UNIT	I-75	GENERAL SUMMARY												TOTAL	NOTES								
				KY 876 INTERCHANGE (EXIT 87)			US 25 INTERCHANGE (EXIT 90)			US 421/US 25 INTERCHANGE (EXIT 97)			RAMP D	RAMP C	RAMP B			RAMP A	RAMP E	RAMP A	RAMP B	RAMP C	RAMP D		
				RAMP A	RAMP B	RAMP C	RAMP A	RAMP B	RAMP C	RAMP A	RAMP B	RAMP C												RAMP A	RAMP B
1985	Delineator For Barrier-Yellow	Each	142																				142		
1986	Delineator For Barrier Wall-B/Y	Each	383																					383	
2003	Relocate Temp Conc Barrier	Lin Ft	2,400																					2,400	(12)
2483	Channel Lining Class II	Ton																						1,482	(1)
2562	Temporary Signs	SF																						1,500	
2568	Mobilization	LS																						1	
2569	Demobilization	LS																						1	
2650	Maintain & Control Traffic	LS																						1	
2671	Portable Changeable Message Sign	Each																						10	
2701	Temp Silt Fence	Lin Ft																						1,000	(4)
2704	Silt Trap Type B	Each																						10	(4)
2705	Silt Trap Type C	Each																						10	(4)
2726	Staking	LS																						1	
2898	Relocate Crash Cushion	Each	8																					8	(12)
3171	Concrete Barrier Wall Type 9T	Lin Ft	1,200																					1,200	(12)
4903	Reference Marker	Each	6																					6	(8)
5950	Erosion Control Blanket	SY																						5,000	(4)
6401	Flexible Delineator Post - MW	Each																						200	(3)
6404	Flexible Delineator Post - MW	Each																						100	(3)
6412	Steel Post Mile Markers	Each	5																					5	(8)
6511	Pave Striping-Temp Paint-6 In	Lin Ft																						344,654	
6542	Pave Striping-Thermo-6 In W	Lin Ft	177,943																					911	
6543	Pave Striping-Thermo-6 In Y	Lin Ft	118,628																					1,052	
6546	Pave Striping-Thermo-12 In W	Lin Ft	10,432																					695	
6549	Pave Striping-Temp Rem Tape-B	Lin Ft																						886	
6550	Pave Striping-Temp Rem Tape-W	Lin Ft																						0	
6551	Pave Striping-Temp Rem Tape-Y	Lin Ft																						11,732	
6556	Pave Striping-Dur TY 1-6 In W	Lin Ft																						5,000	
6557	Pave Striping-Dur TY 1-6 In Y	Lin Ft																						2,500	
6568	Pave Marking-Thermo Stop Bar-24 In	Lin Ft																						772	(2)
6574	Pave Marking-Thermo Curv Arrow	Each																						514	(2)
6613	Inlaid Pavement Marker-B W/R	Each	2,306																					88	
6614	Inlaid Pavement Marker-B Y/R	Each																						23	
8903	Crash Cushion TY VI Class BT TL3	Each	4																					2316	
10020NS	Fuel Adjustment	Doll																						201	
10030NS	Asphalt Adjustment	Doll																						4	(12)
20411ED	Law Enforcement Officer	Hour																						97,941	
24679ED	Pave Marking Thermo Chevron	SF	3,280																					237,645	
24683ED	Pave Marking-Thermo Dotted Lane Extension	Lin Ft	14,431																					800	
25075EC	Queue Protection Vehicle	Hour																						3,382	(9)
25117EC	Furnish Queue Protection Vehicles	Month																						14,431	(10)
26136EC	Portable Queue Warning Alert System	Month																						560	(11)
26137EC	Queue Warning PCMS	Month																						7	(6)
26138EC	Queue Warning Portable Radar Sensors	Month																						42	(6)
26233EC	Mobilization For Concrete Surface Treatment	LS																						42	(6)
26237EC	Connected Arrow Panels	Month																						1	(6)
																								8	(7)

- NOTES:
- (1) Includes 872 tons carried forward from the Drainage Summary and 510 tons carried forward from the Slide Repair Summary. Quantity includes 100 tons to be used as directed by the Engineer for filling in deeper eroded slope areas (see the Fill Slope Erosion Repair Summary).
  - (2) For stripping the bridge decks of the twin bridges over KY 169 (Bridge Nos. 076800096L&R).
  - (3) For replacing damaged or missing flexible delineators or as directed by the Engineer.
  - (4) Use as directed by the Engineer.
  - (5) For concrete sealing of proposed bridge concrete crash wall modifications as shown in the bridge plans.
  - (6) See the Special Note for Portable Queue Warning Alert System.
  - (7) See the Special Note for Connected Arrow Panels.
  - (8) See the Milepost Sign Detail And Summary sheet.
  - (9) For replacement of existing chevrons and cross-hatching. See Std. DWG. Nos. TPM-204 & TPM-205
  - (10) See Std. DWG. No. TPM-200
  - (11) See the Special Note for Traffic Queue Protection Vehicle.
  - (12) Quantity carried forward from the Bridge Work Maintenance Of Traffic Items Summary.

See the Signing Plans for signing quantities and details.  
 See the Traffic Loops section For Traffic Loops plans and quantities.  
 See the Traffic Signal (Radar) section For Traffic Signal (Radar) plans and quantities.  
 See the Structures Plans for structure plans and quantities.

**I-75  
PAVEMENT REHABILITATION PROJECT  
MADISON COUNTY  
ITEM NO. 7-22115.00**

**BRIDGE WORK MAINTENANCE OF TRAFFIC ITEMS SUMMARY**

<b>CODE</b>	<b>ITEM</b>	<b>UNIT</b>	<b>QUANTITY</b>
2003	Relocate Temp Conc Barrier	Lin Ft	2,400
2898	Relocate Crash Cushion	Each	8
3171	Concrete Barrier Wall Type 9T	Lin Ft	1,200
8903	Crash Cushion TY VI Class BT TL3	Each	4

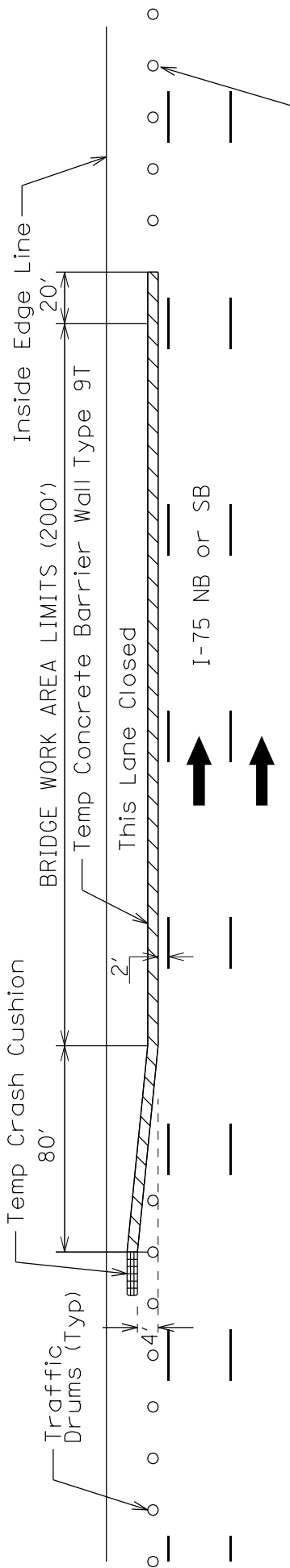
Notes:

- (1) All items carried forward to the General Summary.
- (2) See following page for layout of barrier wall and crash cushions.
- (3) Quantities based on completing bridge work at two bridges and relocating these items to the other three bridges.
- (4) Lane closures required for this work will be incidental to Maintain and Control Traffic.

# MAINTENANCE OF TRAFFIC TEMPORARY BARRIER WALL LAYOUT FOR BRIDGE WORK

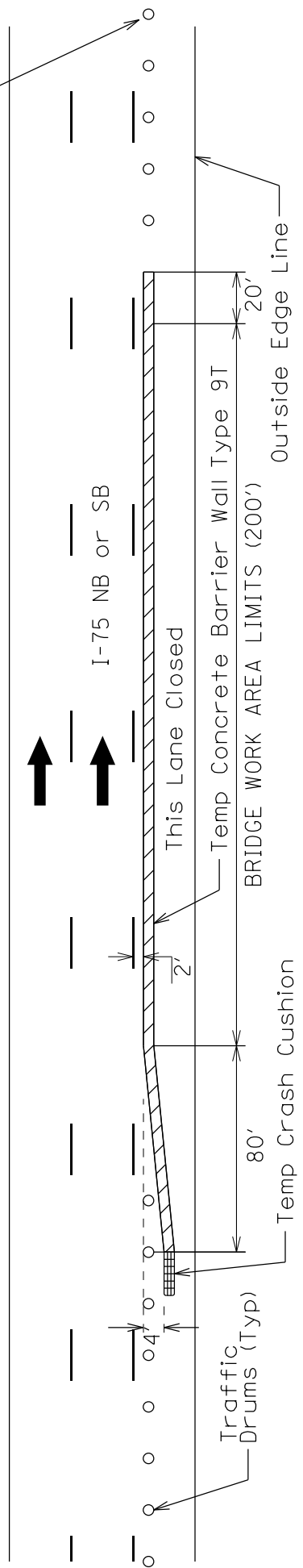
## MEDIAN BRIDGE WORK

Inside Lane Closure Required In Both Directions



Drums Required Only If Lane Closure Continues

## OUTSIDE SHOULDER BRIDGE WORK



All lane closures will be in compliance with the appropriate Standard Drawings and the Manual on Uniform Traffic Control Devices (MUTCD), current edition.

See the Bridge Work Maintenance Of Traffic Items Summary for Quantities.

NOT TO SCALE

**SPECIAL NOTES APPLICABLE TO  
I-75 REHABILITATION PROJECT  
MADISON COUNTY  
ITEM NO. 7-22115.00**

- FIXED COMPLETION DATE AND LIQUIDATED DAMAGES
- BEFORE YOU DIG
- PAVER MOUNTED TEMPERATURE PROFILES
- 11N - LONGITUDINAL PAVEMENT JOINT ADHESIVE
- 1I – PORTABLE CHANGEABLE MESSAGE SIGNS
- ASPHALT MILLING AND TEXTURING
- EXPERIMENTAL KYCT AND HAMBURG TESTING
- ELECTRONIC DELIVERY MANAGEMENT SYSTEM (e-Ticketing)
- CONNECTED ARROW PANELS
- PORTABLE QUEUE WARNING ALERT SYSTEM
- WASTE AND BORROW SITES
- TYPICAL SECTION DIMENSIONS
- GENERAL NOTE 444: ASPHALT PAVEMENT RIDE QUALITY
- GENERAL NOTE 447: COMPACTION OF ASPHALT MIXTURES
- GUARDRAIL DELIVERY VERIFICATION SHEET
- TRAFFIC QUEUE PROTECTION VEHICLE
- FOR SIGNING VARIABLE WORK ZONE SPEED LIMITS IN CONSTRUCTION WORK ZONES

OTHER SPECIAL NOTES MAY APPLY.

Rev 7/2021

## Special Note for Traffic Queue Protection Vehicle

**1.0 DESCRIPTION.** Furnish, Operate, and Maintain Traffic Queue Protection Vehicle at locations and times described herein. The Queue Protection Vehicle is expected to alert motorists (inside and outside of project limits) of all stopped traffic caused by construction activities or incidents within the project limits.

**2.0 MATERIALS.** The contractor shall provide a minimum of one (1) queue protection vehicle for each traveling direction where traffic flow is reduced or modified in a manner where a queue could occur. One (1) additional queue protection vehicle shall be onsite in reserve. The Traffic Queue Protection Vehicle must fulfill the following minimum requirements:

1. A truck mounted attenuators that meets or exceeds NCHRP TL-3 requirements.
2. Four (4) round yellow strobe lights (with auto-dimmers) positioned rear facing
  - Two (2) mounted under rear bumper
  - Two (2) mounted at cab level
  - Visibility of strobe lights can not be deterred by attenuator
3. One (1) standard cab mounted light bar.
4. A truck mounted message board with a minimum of 3 Lines and 8 Characters per line.
5. Four Hour National Traffic Incident Management (TIM) Responder Training for Queue Truck Operators.

**3.0. CONSTRUCTION.** A queue will be defined as anytime that traffic traveling through the project is reduced to a speed of twenty (20) miles per hour or less. The following procedures will be followed when a traffic queue occurs until free flow traffic conditions are present:

- The queue protection vehicle shall be positioned no further than ½ mile upstream from the back of the slow moving traffic.
- The queue protection vehicle shall be positioned on the shoulder and clear of the traveled way so as not to impede traffic.
- The queue protection vehicle shall relocate as needed to maintain approximately ½ mile distance from the back of the slow moving traffic.
- The 2<sup>nd</sup> queue protection vehicle shall be held in reserve, on site, and support the primary vehicle if conditions prevent repositioning by reverse. This vehicle shall not be paid for idle time.
- Queue Protection Vehicles shall be kept in project limits during planned lane closures and other project activities expected to cause a queue. One Queue Protection Vehicle shall remain on the project at all times available to respond to incidents within the project limits in a timely manner.
- Queue length estimates and traffic conditions shall be reported to the KYTC project engineer or designee at the following periods:
  1. At 30 minute intervals
  2. At significant changes
  3. When free flow traffic is achieved
- The KYTC project engineer or designee will document all daily queue reports and provide these logs to the Director of Maintenance and Director of Construction at the end of each month.

The Queue Protection Vehicle shall be mobilized by the Project Engineer or designee for planned construction activities. For unplanned incidents mobilization should be initiated by the first person (KYTC's or Contractor's project staff) receiving notification of the queue.

**4. MEASUREMENT.**

**4.01 Queue Protection Vehicle.** The Department will measure the time from when the vehicle is in position protecting the queue until either free flow traffic is achieved or the vehicle is no longer protecting the queue, whichever occurs first. Idle time will not be paid. The Department will not measure mobilization, removal, maintenance, labor, fuel, or any additional items but will consider them all incidental to this item of work.

**4.02 Furnish Queue Protection Vehicles.** The Department will measure the quantity by each month the Engineer requires to have the Contractor furnish vehicles as defined in '2.0 Materials' of this Special Note. The Department will not measure mobilization, removal, labor, fuel, or any additional items but will consider them all incidental to this item of work. Partial Months will be calculated as shown in the table below.

Days	Increment
0-7 days	0.25
8-14 days	0.50
15-21 days	0.75
22-31 days	1.00

**5. PAYMENT.**

<u>Code</u>	<u>Pay Item</u>	<u>Pay Unit</u>
25075EC	Queue Protection Vehicle	Hour
25117EC	Furnish Queue Protection Vehicles	Month

### Special Note for Signing Variable Work Zone Speed Limits in Construction Work Zones

This note establishes criteria for implementing variable work zone speed limits in construction work zones.

#### 1. Definition

A variable work zone speed limit is in effect only when specified work zone conditions are present.

#### 2. Application of Variable Work Zone Speed Limits

Post a reduced work zone speed limit of 60 miles per hour only where any of the following work zone conditions are present **and** only for the length of the affected roadway:

- Workers present within 15 feet of the traveled way
- Frequent construction vehicle entry/exit
- Temporary barrier within 2 feet of a travel lane
- Drop-offs greater than 2 inches within 8 feet of a travel lane
- Uneven or milled surfaces

If the Engineer determines a condition that is present but not listed above warrants a reduced work zone speed limit, the Contractor shall lower the speed limit to 60 mph as directed by the Engineer.

#### 3. Location and Placement of Speed Zone Signs

Install speed zone signs per [Standard Drawing TTD-130, Option A](#), and every two (2) miles throughout the project. If an interchange is present, install a set of signs within 500 feet of the on-ramp termination, then every two (2) miles unless another interchange is located within that distance.

Put the reduced work zone speed limit into operation by switching on the flashing lights of the first speed zone sign located upstream of the work zone condition.

Operationalize the reduced speed limit **(a)** only in the direction affected by the work zone condition and **(b)** only for the length of roadway affected. For example, if a work zone condition is only present in the northbound direction along a three-mile segment, only put the reduced speed limit into effect on that segment. Retain the original posted speed limit along all remaining northbound segments and the entirety of the southbound direction.

The first speed limit sign located downstream of the point at which the work zone condition ends should **(a)** reinstate the original posted speed limit and **(b)** have no flashing lights activated.

#### 4. Duration of Reduced Speed Limit Posting

The reduced work zone speed limit should remain in effect so long as the following are present:

- Any condition listed in Section 2, or
- Any other condition identified by the Engineer as warranting a speed limit reduction.

If a work zone condition is expected to be paused for less than **six hours**, do not reinstate the original posted speed limit during this period.

#### 5. Penalties

If the Engineer observes the reduced work zone speed limit has not been put into effect as defined in Section 3, they should alert the Contractor of their failure to comply with this Special Note. If the signing is not in compliance within one (1) hour from initial notification by the Engineer, a penalty of \$200 per hour will be assessed on an hourly basis beginning from the initial notification of non-compliance.



**PROPOSAL BID ITEMS**

251103

Page 1 of 4

Report Date 2/14/25

**Section: 0001 - PAVING**

LINE	BID CODE	ALT	DESCRIPTION	QUANTITY	UNIT	UNIT PRIC	FP	AMOUNT
0010	00001		DGA BASE	9,246.00	TON		\$	
0020	00100		ASPHALT SEAL AGGREGATE	1,448.00	TON		\$	
0030	00103		ASPHALT SEAL COAT	173.00	TON		\$	
0040	00194		LEVELING & WEDGING PG76-22	1,927.00	TON		\$	
0050	00219		CL4 ASPH BASE 1.00D PG76-22	5,137.00	TON		\$	
0060	00342		CL4 ASPH SURF 0.38A PG76-22	53,721.00	TON		\$	
0070	02676		MOBILIZATION FOR MILL & TEXT	1.00	LS		\$	
0080	02677		ASPHALT PAVE MILLING & TEXTURING	55,645.00	TON		\$	
0090	02697		EDGE LINE RUMBLE STRIPS	270,158.00	LF		\$	
0100	20071EC		JOINT ADHESIVE	511,734.00	LF		\$	
0110	24891EC		PAVE MOUNT INFRARED TEMP EQUIPMENT	5,328,000.00	SF		\$	
0120	24970EC		ASPHALT MATERIAL FOR TACK NON-TRACKING	241.10	TON		\$	

**Section: 0002 - ROADWAY**

LINE	BID CODE	ALT	DESCRIPTION	QUANTITY	UNIT	UNIT PRIC	FP	AMOUNT
0130	00078		CRUSHED AGGREGATE SIZE NO 2	217.00	TON		\$	
0140	01982		DELINEATOR FOR GUARDRAIL MONO DIRECTIONAL WHITE	100.00	EACH		\$	
0150	01983		DELINEATOR FOR GUARDRAIL MONO DIRECTIONAL YELLOW	50.00	EACH		\$	
0160	01985		DELINEATOR FOR BARRIER - YELLOW	142.00	EACH		\$	
0170	01986		DELINEATOR FOR BARRIER WALL-B/Y	383.00	EACH		\$	
0175	02003		RELOCATE TEMP CONC BARRIER (ADDED 2-14-25)	2,400.00	LF		\$	
0180	02200		ROADWAY EXCAVATION	544.00	CUYD		\$	
0190	02367		GUARDRAIL END TREATMENT TYPE 1	3.00	EACH		\$	
0200	02369		GUARDRAIL END TREATMENT TYPE 2A	4.00	EACH		\$	
0210	02373		GUARDRAIL END TREATMENT TYPE 3	1.00	EACH		\$	
0220	02381		REMOVE GUARDRAIL	2,923.20	LF		\$	
0230	02483		CHANNEL LINING CLASS II	1,482.00	TON		\$	
0240	02562		TEMPORARY SIGNS	1,500.00	SQFT		\$	
0250	02603		FABRIC-GEOTEXTILE CLASS 2	815.00	SQYD		\$	
0260	02650		MAINTAIN & CONTROL TRAFFIC	1.00	LS		\$	
0270	02671		PORTABLE CHANGEABLE MESSAGE SIGN	10.00	EACH		\$	
0280	02701		TEMP SILT FENCE	1,000.00	LF		\$	
0290	02704		SILT TRAP TYPE B	10.00	EACH		\$	
0300	02705		SILT TRAP TYPE C	10.00	EACH		\$	
0310	02726		STAKING	1.00	LS		\$	
0320	02775		ARROW PANEL	4.00	EACH		\$	
0322	02898		RELOCATE CRASH CUSHION (ADDED 2-14-25)	8.00	EACH		\$	
0324	03171		CONC BARRIER WALL TYPE 9T (ADDED 2-14-25)	1,200.00	LF		\$	
0330	03260		CLEAN ROADWAY DRAINS	9.00	EACH		\$	
0340	04903		REFERENCE MARKER	6.00	EACH		\$	

**PROPOSAL BID ITEMS**

251103

Page 2 of 4

Report Date 2/14/25

LINE	BID CODE	ALT	DESCRIPTION	QUANTITY	UNIT	UNIT PRIC	FP	AMOUNT
0350	05950		EROSION CONTROL BLANKET	5,000.00	SQYD		\$	
0360	06401		FLEXIBLE DELINEATOR POST-M/W	200.00	EACH		\$	
0370	06404		FLEXIBLE DELINEATOR POST-M/Y	100.00	EACH		\$	
0380	06412		STEEL POST MILE MARKERS	5.00	EACH		\$	
0390	06511		PAVE STRIPING-TEMP PAINT-6 IN	344,654.00	LF		\$	
0400	06542		PAVE STRIPING-THERMO-6 IN W	197,368.00	LF		\$	
0410	06543		PAVE STRIPING-THERMO-6 IN Y	135,554.00	LF		\$	
0420	06546		PAVE STRIPING-THERMO-12 IN W	11,732.00	LF		\$	
0430	06549		PAVE STRIPING-TEMP REM TAPE-B	5,000.00	LF		\$	
0440	06550		PAVE STRIPING-TEMP REM TAPE-W	2,500.00	LF		\$	
0450	06551		PAVE STRIPING-TEMP REM TAPE-Y	2,500.00	LF		\$	
0460	06556		PAVE STRIPING-DUR TY 1-6 IN W	772.00	LF		\$	
0470	06557		PAVE STRIPING-DUR TY 1-6 IN Y	514.00	LF		\$	
0480	06568		PAVE MARKING-THERMO STOP BAR-24IN	88.00	LF		\$	
0490	06574		PAVE MARKING-THERMO CURV ARROW	23.00	EACH		\$	
0500	06613		INLAID PAVEMENT MARKER-B W/R	2,316.00	EACH		\$	
0510	06614		INLAID PAVEMENT MARKER-B Y/R	201.00	EACH		\$	
0515	08903		CRASH CUSHION TY VI CLASS BT TL3 (ADDED 2-14-25)	4.00	EACH		\$	
0520	10020NS		FUEL ADJUSTMENT	97,941.00	DOLL	\$1.00	\$	\$97,941.00
0530	10030NS		ASPHALT ADJUSTMENT	237,645.00	DOLL	\$1.00	\$	\$237,645.00
0540	20191ED		OBJECT MARKER TY 3	7.00	EACH		\$	
0550	20411ED		LAW ENFORCEMENT OFFICER	800.00	HOUR		\$	
0560	21802EN		G/R STEEL W BEAM-S FACE (7 FT POST)	2,625.00	LF		\$	
0570	24662EC		CLEAN PERFORATED PIPE HEADWALL	28.00	EACH		\$	
0580	24679ED		PAVE MARK THERMO CHEVRON	3,382.00	SQFT		\$	
0590	24683ED		PAVE MARKING-THERMO DOTTED LANE EXTEN	14,431.00	LF		\$	
0595	25075EC		QUEUE PROTECTION VEHICLE (ADDED 2-14-25)	560.00	HOUR		\$	
0600	25078ED		THRIE BEAM GUARDRAIL TRANSITION TL-3	5.00	EACH		\$	
0610	25079ED		THRIE BEAM GUARDRAIL TRANSITION TL-2	4.00	EACH		\$	
0615	25117EC		FURNISH QUEUE PROTECTION VEHICLES (ADDED 2-14-25)	7.00	MONT		\$	
0620	26136EC		PORTABLE QUEUE WARNING ALERT SYSTEM	7.00	MONT		\$	
0630	26137EC		QUEUE WARNING PCMS	42.00	MONT		\$	
0640	26138EC		QUEUE WARNING PORTABLE RADAR SENSORS	42.00	MONT		\$	
0650	26233EC		MOBILIZATION FOR CONCRETE SURF TREATMENT	1.00	LS		\$	
0660	26237EC		CONNECTED ARROW PANEL	8.00	MONT		\$	

**Section: 0003 - BRIDGE NO. 076B00099N - KY 876 OVER I-75**

LINE	BID CODE	ALT	DESCRIPTION	QUANTITY	UNIT	UNIT PRIC	FP	AMOUNT
0670	02403		REMOVE CONCRETE MASONRY	84.00	CUYD		\$	
0680	08100		CONCRETE-CLASS A	140.00	CUYD		\$	
0690	08150		STEEL REINFORCEMENT	9,424.00	LB		\$	

**PROPOSAL BID ITEMS**

251103

Page 3 of 4

Report Date 2/14/25

LINE	BID CODE	ALT	DESCRIPTION	QUANTITY	UNIT	UNIT PRIC	FP	AMOUNT
0700	21935EN		REMOVE CONC MEDIAN BARRIER	50.00	LF		\$	
0710	23378EC		CONCRETE SEALING	2,560.00	SQFT		\$	

**Section: 0004 - BRIDGE NO. 076B00096L - I-75 OVER KY 169**

LINE	BID CODE	ALT	DESCRIPTION	QUANTITY	UNIT	UNIT PRIC	FP	AMOUNT
0720	02403		REMOVE CONCRETE MASONRY	3.00	CUYD		\$	
0730	08104		CONCRETE-CLASS AA	3.00	CUYD		\$	
0740	08151		STEEL REINFORCEMENT-EPOXY COATED	418.00	LB		\$	
0750	23378EC		CONCRETE SEALING	97.00	SQFT		\$	

**Section: 0005 - BRIDGE NO. 076B00093N - US 25-421 OVER I-75**

LINE	BID CODE	ALT	DESCRIPTION	QUANTITY	UNIT	UNIT PRIC	FP	AMOUNT
0760	02403		REMOVE CONCRETE MASONRY	73.00	CUYD		\$	
0770	08100		CONCRETE-CLASS A	260.00	CUYD		\$	
0780	08150		STEEL REINFORCEMENT	20,239.00	LB		\$	
0790	21935EN		REMOVE CONC MEDIAN BARRIER	50.00	LF		\$	
0800	23378EC		CONCRETE SEALING	4,980.00	SQFT		\$	

**Section: 0006 - BRIDGE NO. 076B00123N - KY 627 OVER I-75**

LINE	BID CODE	ALT	DESCRIPTION	QUANTITY	UNIT	UNIT PRIC	FP	AMOUNT
0810	02403		REMOVE CONCRETE MASONRY	69.00	CUYD		\$	
0820	08100		CONCRETE-CLASS A	155.00	CUYD		\$	
0830	08150		STEEL REINFORCEMENT	8,728.00	LB		\$	
0840	21935EN		REMOVE CONC MEDIAN BARRIER	50.00	LF		\$	
0850	23378EC		CONCRETE SEALING	2,590.00	SQFT		\$	

**Section: 0007 - BRIDGE NO. 076B00039N - US 25-421 OVER I-75**

LINE	BID CODE	ALT	DESCRIPTION	QUANTITY	UNIT	UNIT PRIC	FP	AMOUNT
0860	02403		REMOVE CONCRETE MASONRY	17.00	CUYD		\$	
0870	08100		CONCRETE-CLASS A	110.00	CUYD		\$	
0880	08150		STEEL REINFORCEMENT	8,658.00	LB		\$	
0890	21935EN		REMOVE CONC MEDIAN BARRIER	50.00	LF		\$	
0900	23378EC		CONCRETE SEALING	2,440.00	SQFT		\$	

**Section: 0008 - SIGNING**

LINE	BID CODE	ALT	DESCRIPTION	QUANTITY	UNIT	UNIT PRIC	FP	AMOUNT
0910	06407		SBM ALUM SHEET SIGNS .125 IN	330.75	SQFT		\$	
0920	06410		STEEL POST TYPE 1	291.00	LF		\$	
0930	06490		CLASS A CONCRETE FOR SIGNS	4.60	CUYD		\$	

**PROPOSAL BID ITEMS**

251103

Page 4 of 4

Report Date 2/14/25

LINE	BID CODE	ALT	DESCRIPTION	QUANTITY	UNIT	UNIT PRIC	FP	AMOUNT
0940	21596ND		GMSS TYPE D	20.00	EACH		\$	
0950	24265EC		INSTALL SIGN POST REFLECTORS	26.00	EACH		\$	
0960	24631EC		BARCODE SIGN INVENTORY	32.00	EACH		\$	
0970	24689EC		PAVE MARK THERMO-WRONG WAY ARROW	10.00	EACH		\$	

**Section: 0009 - SIGNALIZATION**

LINE	BID CODE	ALT	DESCRIPTION	QUANTITY	UNIT	UNIT PRIC	FP	AMOUNT
0980	24955ED		REMOVE SIGNAL EQUIPMENT	3.00	EACH		\$	
0990	26119EC		INSTALL RADAR PRESENCE DETECTOR TYPE A	9.00	EACH		\$	

**Section: 0010 - TRAFFIC LOOPS**

LINE	BID CODE	ALT	DESCRIPTION	QUANTITY	UNIT	UNIT PRIC	FP	AMOUNT
1000	04793		CONDUIT-1 1/4 IN	240.00	LF		\$	
1010	04795		CONDUIT-2 IN	60.00	LF		\$	
1020	04820		TRENCHING AND BACKFILLING	270.00	LF		\$	
1030	04829		PIEZOELECTRIC SENSOR	18.00	EACH		\$	
1040	04830		LOOP WIRE	7,950.00	LF		\$	
1050	04895		LOOP SAW SLOT AND FILL	1,800.00	LF		\$	
1060	20359NN		GALVANIZED STEEL CABINET	6.00	EACH		\$	
1070	20360ES818		WOOD POST	12.00	EACH		\$	
1080	20391NS835		ELECTRICAL JUNCTION BOX TYPE A	6.00	EACH		\$	

**Section: 0011 - DEMOBILIZATION &/OR MOBILIZATION**

LINE	BID CODE	ALT	DESCRIPTION	QUANTITY	UNIT	UNIT PRIC	FP	AMOUNT
1090	02568		MOBILIZATION	1.00	LS		\$	
1100	02569		DEMOBILIZATION	1.00	LS		\$	